

Valentine®
+ SWISS MADE

Chip scuttle VMAX



Chip scuttle VMAX

For constant hot food

General information



Quality and sustainability

100% stainless steel construction, robust and easy to clean.



2 heating elements (top and bottom) for an optimised heat distribution.

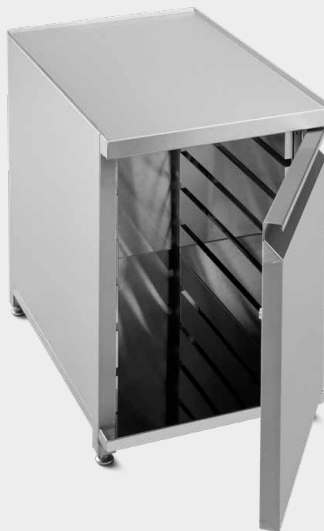


Upper heating element

Front part tilted up for easier access with the basket.

Option

Support table (390x580x590mm)) with G/N containers storage possibility. Total height with the chip scuttle: 850mm.



Technical information

Dimensions*	398x600x265/696mm
Net weight	16kg
Voltage	1N230V
Kilowatts	0,85kW
Fuses	3,7A



* Width x depth x height